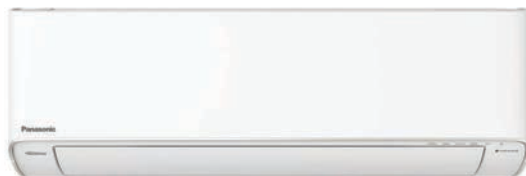




RESIDENTIAL AIR CONDITIONERS 2024/2025








PREMIUM INVERTER



DELUXE INVERTER



PRODUCT LINE-UP			FEATURES EXPLANATION
<p>XU</p> <p>PREMIUM INVERTER</p>	<p>NEW</p>  <p>1.0HP - 3.0HP</p>	<p>nanoeX Generator Mark3 INSIDE CLEANING ON DEMAND BUILT-IN EASY CONNECT Comfort Cloud App</p> <p>HUMIDITY SENSOR + DRY MODE HUMIDITY SENSOR + iAutoX INTELLIGENT DYNAMIC COOL</p> <p>nanoe-G AEROWINGS AI ECO</p>	<p>Cleaner Air</p> <p>nanoeX nanoe™ X effectively deodorises and inhibits various pollutants for a fresher and cleaner space.</p> <p>INSIDE CLEANING ON DEMAND Inside cleaning works inside of an indoor unit by removing moisture, and releases nanoe™ X to inhibit various pollutants.</p> <p>nanoe-G nanoe-G effectively removes up to 99% of PM2.5.</p>
<p>RU</p> <p>DELUXE INVERTER</p>	<p>NEW</p>  <p>1.0HP - 2.5HP</p>	<p>nanoeX Generator Mark2 INSIDE CLEANING ON DEMAND BUILT-IN EASY CONNECT Comfort Cloud App</p> <p>AEROWINGS nanoe-G</p> <p>POWERFUL AI ECO</p>	<p>Convenience</p> <p>Comfort Cloud App Provides convenience to connect and control the air conditioner anywhere, anytime.</p>
<p>PU</p> <p>STANDARD INVERTER</p>	<p>NEW</p>  <p>1.0HP - 3.0HP</p>	<p>BUILT-IN EASY CONNECT Comfort Cloud App BIG FLAP (CS-PU9/12/18AKQ)</p> <p>AEROWINGS (CS-PU24/30AKQ) POWERFUL AI ECO</p>	<p>Comfort</p> <p>HUMIDITY SENSOR + DRY MODE Air conditioner with Humidity Sensor and Dry Mode helps to remove excess moisture in the room while preventing overcooling.</p> <p>HUMIDITY SENSOR + iAutoX INTELLIGENT DYNAMIC COOL Air conditioner with Humidity Sensor and iAUTO-X mode helps to provide an ideal sleep environment.</p> <p>POWERFUL POWERFUL POWERFUL Mode cools your room faster for instant cooling comfort.</p> <p>AEROWINGS Further and faster airflow across the room using 2 flaps.</p> <p>BIG FLAP Big bottom flap directs cool air across the room.</p>
<p>PU</p> <p>STANDARD INVERTER</p>	 <p>4.0HP</p>	<p>POWERFUL</p>	
<p>PN</p> <p>STANDARD NON-INVERTER</p>	 <p>1.0HP - 2.5HP</p>	<p>BIG FLAP (CS-PN9/12XKQ) AEROWINGS (CS-PN18/24XKQ)</p> <p>POWERFUL</p>	<p>Energy Efficiency</p> <p>INVERTER Varies the rotation speed of the compressor for higher energy saving.</p> <p>AI ECO Auto-adjusts the optimal ECO level based on the heat load conditions and air conditioning cooling capacity.</p>



nanoe™ X Clean 'n Care function



Scan to know more



High Efficiency of nanoex X Generator Mark 3

nanoe™ X technology with mark 3 generator contains 100 times more hydroxyl radicals compared to nanoex™. This helps to effectively inhibit pollutants and deodorise odours at a faster pace.

4X Faster in Virus Inhibition vs nanoex X Generator Mark 2

Required time to inhibit 99% of viruses*1

Device	Time (hours)
Conventional Device	8
nanoe™ X Generator Mark 2	2
Latest Device (nanoe™ X Generator Mark 3)	0.5

4X faster

7 Effects of nanoex™ X

Inhibits 5 Types of Pollutants

- Bacteria & Viruses
- Mould
- Allergens
- Pollen
- Hazardous Substances

Deodorises Odours

Moisturises Skin & Hair

nanoe™ X effectively deodorises and inhibits pollutants in air and on surfaces*2

*1 nanoex X Generator Mark 2 • Testing Organisation: Japan Food Research Laboratories • Test Subject: Adhered bacteriophage Φx174 • Test Volume: Approx. 25 m³ laboratory (3.3×3.5×2.2m) • Test Result: Inhibited 99.8% in 8 hours • Report No: 13001265005-01. nanoex X Generator Mark 3 • Testing organisation: Shokukanken, Inc. • Test Subject: Adhered MS2 Phage Virus • Test Volume: Approx. 25m³ laboratory • Test Result: Inhibited 99.99% in 2 hours • Test Report No: 227131N

*2 For more details on nanoex™ X test report, you can visit <https://www.panasonic.com/ph/nanoe/all/verification/evidence.html>

Inside Cleaning On Demand

Newly improved inside cleaning on demand provides the convenience to activate this function on a need basis. Inside cleaning works inside of an indoor unit by removing moisture, and releases nanoex™ X to inhibit various pollutants. Improved cross flow fan with anti-dust coating prevents dust adherence.

INSIDE CLEANING ON DEMAND

By Remote Controller OR Comfort Cloud App:

Turn off the AC and press the nanoex™ X button for more than 3 seconds to activate inside cleaning.

Turn off the AC and tap the 'Inside Clean' icon in Panasonic Comfort Cloud App to activate inside cleaning.

Effectiveness of Inside Cleaning

Filter, Evaporator, Air Outlet

Proven nanoex™ X inhibition on

- Mould³
- Bacteria⁴
- Viruses⁴

Cross Flow Fan

Without coating: Adhered dust

Anti-Dust Cross Flow Fan: Maintain cleanliness

The amount of dust may change depending on the usage frequency and environment. Anti-dust cross flow fan is available for PREMIUM INVERTER.

Notes: (1) Air filter routine maintenance is required to ensure optimal performance. (2) Illustrations of app screens may differ from the actual screen appearance.

³ • Test Organisation: Laboratory for mold prediction • Test Subject: Mould [Aspergillus penicillioides K-712] • Test Result: Mould germination and growth from spores are inhibited inside the indoor unit under the inside cleaning operation • Test Report No: 220207 • nanoex™ X effectiveness on mould inhibition is applicable to PREMIUM INVERTER only.

⁴ • Testing Organisation: Protectea, Ltd • Test Subject: Bacteria [Escherichia coli NBRC3301] and Virus [Escherichia coli NBRC320012] • Test Result: 99% inhibited (compared to non-operation) • Test Report No: PR190803 [Filter & Evaporator]; PR191102 [Air Outlet]

⁵ Inside Cleaning On Demand function is applicable to PREMIUM INVERTER and DELUXE INVERTER.

Connect & Control Your AC Anywhere, Anytime with Comfort Cloud App

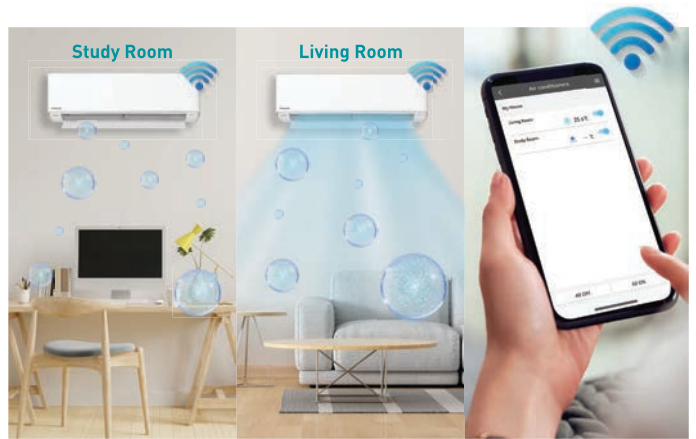
Control multiple air conditioners in one location or multiple locations when you are away from home.



Comfort Cloud App



Scan to know more



Benefits of Panasonic Comfort Cloud App

The application offers one-stop control for all your air conditioners to suit your needs and preferences.



Monitor Energy Consumption

View the energy consumption of individual units by comparing the usage patterns daily, weekly, monthly, and yearly.



Purify Your Home with nanoE™ X

Switch on nanoE™ X mode with cooling OFF/ON to enjoy a clean and fresh home with your loved ones.



nanoE™ X Simulation

See the nanoE™ X coverage in your space through a simulation.



Pre-Cool Your Space



Weekly Timer



Error Notifications



Multi-Unit Control

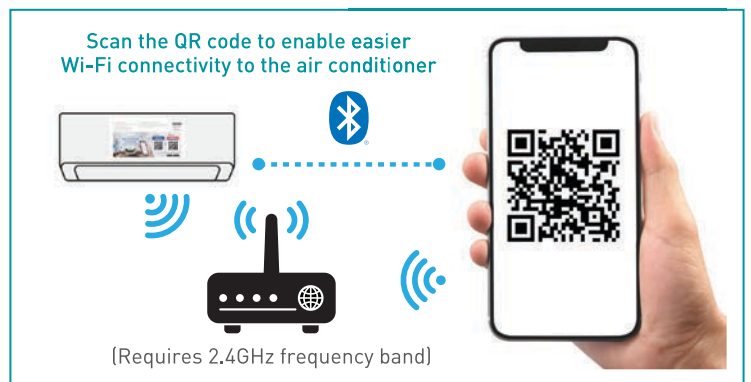
Secured & Easier Setup with Advanced Scan Connectivity**

The advanced built-in Wi-Fi setup enables easier and faster connection to Panasonic Comfort Cloud App by scanning the QR code.



**Complied with internal cybersecurity guidelines based on cybersecurity trends and the regulations of each country. The advanced built-in Wi-Fi setup applicable to PREMIUM INVERTER, DELUXE INVERTER and STANDARD INVERTER model.

Note: The Bluetooth® word mark and logos are registered trademarks owned by Bluetooth SIG, Inc. and any use of such marks by Panasonic is under license. Other trademarks and trade names are those of their respective owners.



nanoe-G

Remove Dust Particles (PM2.5)

Effective in removing 99%*1 of dust particles, nanoe-G releases negative ions to capture dust particles sized as small as PM2.5, carrying them back to the filter to provide a clean and pristine living space.



*1 •Testing Organisation: FCG Research Institute, Inc. •Test Subject: Cigarette smoke [as PM2.5] •Test Volume: 23m³ •Test Result: Removed by 99% [compared to the initial concentration] •Test Report No: 25034

Better Living with Energy-Saving and Eco-Friendly Technologies



Achieve **high 5-star rating** on energy efficiency for better savings.

Inverter Technology

Panasonic's Inverter air conditioners integrate DC motor to offer better performance in terms of energy efficiency, quiet operation and wide output range. Inverter technology minimises temperature fluctuation to save energy without compromising comfort.



Scan to know more



Great Energy Savings

Varying the speed of the compressor according to temperature changes with the aim to minimise temperature fluctuations so you can enjoy energy savings and cooling comfort.



Quiet Operation

Smooth operation and lower noise as low as 19dB(A)*.

*Applicable to PREMIUM INVERTER (1.0HP - 1.5HP).



Wide Output Range

Balance comfort level depending on the number of occupants in a room.

High Cooling Seasonal Performance Factor (CSPF)

Panasonic air conditioners have a high Cooling Seasonal Performance Factor - a more realistic energy efficiency measurement based on the customer's actual environment of use over an entire year.



Intelligently Balances Energy Savings and Comfort

Every room in the house has a different temperature and it varies throughout the day. ECO mode with A.I. learns and judges the optimal ECO level to provide a good balance between cooling comfort and energy savings.



* Comparison of ECO Mode & normal mode by using 1.5HP INVERTER model.

Humidity Control for Better Comfort

Built-in Humidity Sensor

HUMIDITY SENSOR + DRY MODE
Remove moisture in the room.

HUMIDITY SENSOR + iAutoX
Provide ideal sleep environment.

Humidity Control with Humidity Sensor + Dry Mode

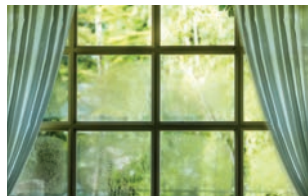
Dry Mode operates together with built-in Humidity Sensor, helping the air conditioner to receive accurate room humidity situation data to efficiently reduce and adjust the humidity level to below 55%, removing excess moisture in the room while preventing overcooling.



Benefits of Panasonic Air Conditioner with Humidity Sensor + Dry Mode

When Do You Need It?

- High humidity but room temperature isn't hot
- Raining weather where there is damp smell in the room
- Living in an area with high humidity



Comfort without Overcooling
Constantly monitors and adjusts relative humidity to below 55%, and temperature to avoid overcooling.



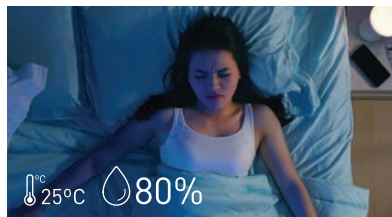
Reduces Dampness
Air stays fresh with no damp smell in the room.



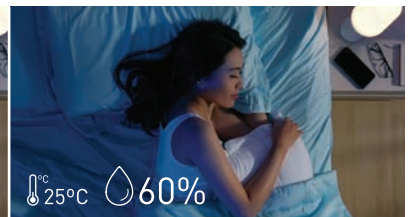
Protects Household
Prevents growth of mould by removing excess moisture from the air.

Humidity Control with Humidity Sensor + iAUTO-X

Air conditioner with iAUTO-X and Humidity Sensor constantly monitors and adjusts relative humidity level to below 60% to ensure a balanced cooling sensation by reducing heat for an optimal cooling comfort.



Without Humidity Sensor



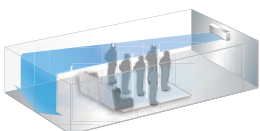
With iAUTO-X & Humidity Sensor

Air conditioner with iAUTO-X and Humidity Sensor controls relative humidity to below 60% for a restful sleep through the night.

**Built-in Humidity Sensor is available for PREMIUM INVERTER model.

AIRFLOW

Comfort Cooling with AEROWINGS and Big Flap



Stronger and longer airflow up to 15 meters*.

AEROWINGS



Directs cool air across the room.

BIG FLAP



*Tested based on PREMIUM INVERTER.

Faster Cooling with iAUTO-X and POWERFUL Mode



Cool your living spaces rapidly and maintain comfortable temperature throughout the day.

iAUTO-X Operation

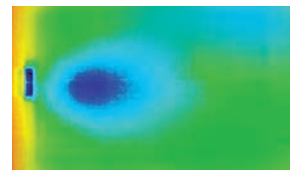
iAUTO-X provides stronger and faster cooling using Panasonic Thermal Enhancement Technology (P-TEch), enabling the compressor to achieve maximum frequency quickly from start-up.



Scan to know more



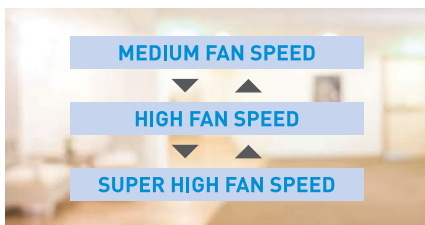
iAUTO-X



cooler ← warmer

Concentrated airflow cools instantly. Room is evenly cooled.

Uniqueness of iAUTO-X



Automatic Fan Speed

iAUTO-X automatically switches fan speed depending on the temperature difference between the room and the set temperature.



Automatic Flap Control

After reaching the set temperature, the flap moves upwards automatically to perform shower cooling.



Reactivate iAUTO-X

Second press on the iAUTO-X button reactivates faster cooling, even if the number of people in the room increases.

*Comparison of iAUTO-X Mode & normal COOL mode by using 1.5HP PREMIUM INVERTER model.
 **Applicable to PREMIUM INVERTER model.

POWERFUL Cooling

POWERFUL Mode cools your room faster by 18%* during start-up to bring you cooling comfort instantly on a hot day.



Scan to know more



POWERFUL



*Comparison of POWERFUL Cool Mode & normal cool mode by using 1.5HP Inverter Model. 18% faster cooling is applicable to DELUXE INVERTER and STANDARD INVERTER (1.0HP - 3.0HP).



CS-XU9AKQ | CS-XU12AKQ



CS-XU18AKQ | CS-XU24AKQ



CS-XU30AKQ



Wireless
(Standard)



Wired
CZ-RD514C
(Optional)



MODEL	INDOOR UNIT (60Hz)		CS-XU9AKQ	CS-XU12AKQ	CS-XU18AKQ	CS-XU24AKQ	CS-XU30AKQ
	OUTDOOR UNIT		CU-XU9AKQ	CU-XU12AKQ	CU-XU18AKQ	CU-XU24AKQ	CU-XU30AKQ
Cooling Capacity	(min-max)	kW	2.55 [0.92-3.20]	3.50 [1.02-4.20]	5.30 [1.10-6.21]	6.10 [1.12-7.18]	8.20 [1.30-10.00]
	(min-max)	kJ/h	9,180 [3,310-11,520]	12,600 [3,670-15,120]	19,080 [3,960-22,360]	21,960 [4,030-25,850]	29,520 [4,680-36,000]
EER	(min-max)	kJ/hW	14.34 [14.71-13.09]	14.00 [14.12-12.81]	15.14 [15.84-13.15]	14.17 [16.12-12.61]	12.83 [13.00-11.25]
CSPF		W/W	6.26 [5★]	6.53 [5★]	6.92 [5★]	6.81 [5★]	5.70 [5★]
Electrical Data	Voltage	V	230	230	230	230	230
	Current	A	3.1	4.1	5.7	6.9	10.2
	Power Input (min-max)	W	640 [225-880]	900 [260-1,180]	1,260 [250-1,700]	1,550 [250-2,050]	2,300 [360-3,200]
Moisture Removal		L/h (Pt/h)	1.6 [3.4]	2.0 [4.2]	2.9 [6.1]	3.4 [7.2]	4.8 [10.1]
Air Circulation	Indoor	m³/min (ft³/min)	11.8 [415]	12.5 [440]	18.7 [660]	19.2 [680]	22.2 [785]
	Outdoor	m³/min (ft³/min)	27.6 [970]	30.9 [1,090]	34.9 [1,230]	46.3 [1,635]	45.9 [1,620]
Noise Level	Indoor (H / L / Q-Lo)	dB (A)	38/26/19	40/28/19	44/32/27	45/34/28	47/37/34
	Outdoor (H)	dB (A)	47	48	50	51	53
Unit Dimension- Installed Condition Indoor (Outdoor)	Height	mm	295 [511]	295 [542]	295 [619]	295 [695]	309 [695]
		inch	11-5/8 [20-1/8]	11-5/8 [21-11/32]	11-5/8 [24-3/8]	11-5/8 [27-3/8]	12-3/16 [27-3/8]
	Width	mm	870 [650]	870 [780]	1,040 [824]	1,040 [875]	1,212 [875]
		inch	34-9/32 [25-19/32]	34-9/32 [30-23/32]	40-31/32 [32-15/32]	40-31/32 [34-15/32]	47-23/32 [34-15/32]
	Depth	mm	229 [230]	229 [289]	244 [299]	244 [320]	269 [320]
		inch	9-1/32 [9-1/16]	9-1/32 [11-13/32]	9-5/8 [11-25/32]	9-5/8 [12-5/8]	10-19/32 [12-5/8]
Packaging Dimension- Stacking Condition Indoor (Outdoor)	Height	mm	289 [582]	289 [607]	314 [684]	314 [761]	352 [761]
		inch	11-13/32 [22-15/16]	11-13/32 [23-29/32]	12-3/8 [26-15/16]	12-3/8 [29-31/32]	13-7/8 [29-31/32]
	Width	mm	952 [793]	952 [900]	1,148 [967]	1,148 [1,049]	1,300 [1,049]
		inch	37-1/2 [31-1/4]	37-1/2 [35-7/16]	45-7/32 [38-3/32]	45-7/32 [41-5/16]	51-3/16 [41-5/16]
	Depth	mm	383 [356]	383 [405]	383 [425]	383 [460]	403 [460]
		inch	15-3/32 [14-1/32]	15-3/32 [15-31/32]	15-3/32 [16-3/4]	15-3/32 [18-1/8]	15-7/8 [18-1/8]
Net Weight	Indoor / Outdoor	kg (lb)	10 [22] / 17 [37]	10 [22] / 22 [49]	12 [26] / 31 [68]	12 [26] / 38 [84]	16 [35] / 43 [95]
Gross Weight	Indoor / Outdoor	kg (lb)	12 [26] / 19 [42]	12 [26] / 25 [55]	14 [31] / 34 [75]	14 [31] / 42 [93]	19 [42] / 47 [104]
Refrigerant Pipe Diameter	Liquid Side	mm	ø 6.35	ø 6.35	ø 6.35	ø 6.35	ø 6.35
		inch	1/4	1/4	1/4	1/4	1/4
	Gas Side	mm	ø 9.52	ø 9.52	ø 12.70	ø 12.70	ø 15.88
		inch	3/8	3/8	1/2	1/2	5/8
Pipe Extension	Chargeless Pipe Length	m	7.5	7.5	10.0	10.0	10.0
	Maximum Pipe Length	m	20	20	30	30	30
	Maximum Elevation Length	m	15	15	20	20	20
	Additional Refrigerant Gas*	g/m	10	10	15	15	25
Power Supply			Outdoor	Outdoor	Outdoor	Outdoor	Outdoor

*When pipes are not extended from the chargeless pipe length, the required amount of refrigerant is already in the unit.

OUTDOOR UNIT

**BLUE FIN
CONDENSER**



CU-XU9AKQ



CU-XU12AKQ



CU-XU18AKQ



CU-XU24AKQ
CU-XU30AKQ



CS-RU9AKQ | CS-RU12AKQ | CS-RU18AKQ



CS-RU24AKQ



Wireless (Standard)



Wired CZ-RD514C (Optional)



Wireless (Standard)



Wired CZ-RD514C (Optional)



MODEL	INDOOR UNIT (60Hz)		CS-RU9AKQ	CS-RU12AKQ	CS-RU18AKQ	CS-RU24AKQ
	OUTDOOR UNIT		CU-RU9AKQ	CU-RU12AKQ	CU-RU18AKQ	CU-RU24AKQ
Cooling Capacity	(min-max)	kW	2.65 (0.90-3.40)	3.52 (1.02-4.10)	5.20 (1.10-5.60)	6.25 (1.12-7.18)
	(min-max)	kJ/h	9,540 (3,240-12,240)	12,670 (3,670-14,760)	18,720 (3,960-20,160)	22,500 (4,030-25,850)
EER	(min-max)	kJ/hW	12.72 (14.40-11.88)	12.30 (13.35-11.71)	10.95 (13.66-10.90)	12.50 (16.12-12.43)
CSPF		W/W	5.36 (5★)	5.37 (5★)	5.28 (5★)	6.11 (5★)
Electrical Data	Voltage	V	230	230	230	230
	Current	A	3.6	4.6	7.5	7.9
	Power Input (min-max)	W	750 (225-1,030)	1,030 (275-1,260)	1,710 (290-1,850)	1,800 (250-2,080)
Moisture Removal		L/h (Pt/h)	1.6 (3.4)	2.0 (4.2)	2.9 (6.1)	3.5 (7.4)
Air Circulation	Indoor	m³/min (ft³/min)	10.3 (365)	11.0 (390)	12.6 (445)	19.9 (700)
	Outdoor	m³/min (ft³/min)	26.7 (940)	30.6 (1,080)	39.3 (1,390)	34.9 (1,230)
Noise Level	Indoor (H / L / Q-Lo)	dB (A)	36/26/21	38/28/21	44/34/28	45/34/29
	Outdoor (H)	dB (A)	47	48	51	51
Unit Dimension- Installed Condition Indoor (Outdoor)	Height	mm	290 (511)	290 (542)	290 (619)	295 (619)
		inch	11-7/16 [20-1/8]	11-7/16 [21-11/32]	11-7/16 [24-3/8]	11-5/8 [24-3/8]
	Width	mm	765 (650)	765 (780)	765 (824)	1,060 (824)
		inch	30-1/8 [25-19/32]	30-1/8 [30-23/32]	30-1/8 [32-15/32]	41-3/4 [32-15/32]
	Depth	mm	214 (230)	214 (289)	214 (299)	249 (299)
		inch	8-7/16 [9-1/16]	8-7/16 [11-13/32]	8-7/16 [11-25/32]	9-13/16 [11-25/32]
Packaging Dimension- Stacking Condition Indoor (Outdoor)	Height	mm	266 (582)	266 (607)	266 (684)	314 (684)
		inch	10-1/2 [22-15/16]	10-1/2 [23-29/32]	10-1/2 [26-15/16]	12-3/8 [26-15/16]
	Width	mm	847 (793)	847 (900)	847 (967)	1,168 (967)
		inch	33-3/8 [31-1/4]	33-3/8 [35-7/16]	33-3/8 [38-3/32]	46 [38-3/32]
	Depth	mm	373 (356)	373 (405)	373 (425)	383 (425)
		inch	14-11/16 [14-1/32]	14-11/16 [15-31/32]	14-11/16 [16-3/4]	15-3/32 [16-3/4]
Net Weight	Indoor / Outdoor	kg (lb)	8 (18) / 18 (40)	8 (18) / 22 (49)	9 (20) / 29 (64)	12 (26) / 32 (71)
Gross Weight	Indoor / Outdoor	kg (lb)	9 (20) / 20 (44)	9 (20) / 25 (55)	10 (22) / 32 (71)	15 (33) / 35 (77)
Refrigerant Pipe Diameter	Liquid Side	mm	ø 6.35	ø 6.35	ø 6.35	ø 6.35
		inch	1/4	1/4	1/4	1/4
	Gas Side	mm	ø 9.52	ø 9.52	ø 12.70	ø 12.70
		inch	3/8	3/8	1/2	1/2
Pipe Extension	Chargeless Pipe Length	m	7.5	7.5	10.0	10.0
	Maximum Pipe Length	m	20	20	30	30
	Maximum Elevation Length	m	15	15	20	20
	Additional Refrigerant Gas*	g/m	10	10	15	15
Power Supply			Outdoor	Outdoor	Outdoor	Outdoor

*When pipes are not extended from the chargeless pipe length, the required amount of refrigerant is already in the unit.

OUTDOOR UNIT

BLUE FIN CONDENSER



CU-RU9AKQ



CU-RU12AKQ



CU-RU18AKQ
CU-RU24AKQ



CS-PU9AKQ | CS-PU12AKQ | CS-PU18AKQ



CS-PU24AKQ



CS-PU30AKQ



Wireless
(Standard)



Wired
CZ-RD514C
(Optional)



Wireless
(Standard)



Wired
CZ-RD514C
(Optional)



MODEL	INDOOR UNIT (60Hz)		CS-PU9AKQ	CS-PU12AKQ	CS-PU18AKQ	CS-PU24AKQ	CS-PU30AKQ
	OUTDOOR UNIT		CU-RU9AKQ	CU-RU12AKQ	CU-RU18AKQ	CU-RU24AKQ	CU-XU30AKQ
Cooling Capacity	(min-max)	kW	2,65 [0,90-3,40]	3,52 [1,02-4,10]	5,20 [1,10-5,60]	6,25 [1,12-7,18]	8,20 [1,30-10,00]
	(min-max)	kJ/h	9,540 [3,240-12,240]	12,670 [3,670-14,760]	18,720 [3,960-20,160]	22,500 [4,030-25,850]	29,520 [4,680-36,000]
EER	(min-max)	kJ/hW	12.72 [14,40-11.88]	12.30 [13.35-11.71]	10.95 [13.66-10.90]	12.50 [16.12-12.43]	12.83 [13.00-11.25]
CSPF		W/W	5.36 [5★]	5.37 [5★]	5.28 [5★]	6.11 [5★]	5.70 [5★]
Electrical Data	Voltage	V	230	230	230	230	230
	Current	A	3.6	4.6	7.5	7.9	10.2
	Power Input (min-max)	W	750 [225-1,030]	1,030 [275-1,260]	1,710 [290-1,850]	1,800 [250-2,080]	2,300 [360-3,200]
Moisture Removal		L/h (Pt/h)	1.6 [3.4]	2.0 [4.2]	2.9 [6.1]	3.5 [7.4]	4.8 [10.1]
Air Circulation	Indoor	m³/min (ft³/min)	10.3 [365]	11.0 [390]	12.6 [445]	19.9 [700]	22.2 [785]
	Outdoor	m³/min (ft³/min)	26.7 [940]	30.6 [1,080]	39.3 [1,390]	34.9 [1,230]	45.9 [1,620]
Noise Level	Indoor (H / L / Q-Lo)	dB (A)	36/26/21	38/28/21	44/34/28	45/34/29	47/37/34
	Outdoor (H)	dB (A)	47	48	51	51	53
Unit Dimension- Installed Condition Indoor (Outdoor)	Height	mm	290 [511]	290 [542]	290 [619]	295 [619]	309 [695]
		inch	11-7/16 [20-1/8]	11-7/16 [21-11/32]	11-7/16 [24-3/8]	11-5/8 [24-3/8]	12-3/16 [27-3/8]
	Width	mm	765 [650]	765 [780]	765 [824]	1,060 [824]	1,212 [875]
		inch	30-1/8 [25-19/32]	30-1/8 [30-23/32]	30-1/8 [32-15/32]	41-3/4 [32-15/32]	47-23/32 [34-15/32]
	Depth	mm	214 [230]	214 [289]	214 [299]	249 [299]	269 [320]
		inch	8-7/16 [9-1/16]	8-7/16 [11-13/32]	8-7/16 [11-25/32]	9-13/16 [11-25/32]	10-19/32 [12-5/8]
Packaging Dimension- Stacking Condition Indoor (Outdoor)	Height	mm	266 [582]	266 [607]	266 [684]	314 [684]	352 [761]
		inch	10-1/2 [22-15/16]	10-1/2 [23-29/32]	10-1/2 [26-15/16]	12-3/8 [26-15/16]	13-7/8 [29-31/32]
	Width	mm	847 [793]	847 [900]	847 [967]	1,168 [967]	1,300 [1,049]
		inch	33-3/8 [31-1/4]	33-3/8 [35-7/16]	33-3/8 [38-3/32]	46 [38-3/32]	51-3/16 [41-5/16]
	Depth	mm	373 [356]	373 [405]	373 [425]	383 [425]	403 [460]
		inch	14-11/16 [14-1/32]	14-11/16 [15-31/32]	14-11/16 [16-3/4]	15-3/32 [16-3/4]	15-7/8 [18-1/8]
Net Weight	Indoor / Outdoor	kg (lb)	8 [18] / 18 [40]	8 [18] / 22 [49]	9 [20] / 29 [64]	12 [26] / 32 [71]	16 [35] / 43 [95]
Gross Weight	Indoor / Outdoor	kg (lb)	9 [20] / 20 [44]	9 [20] / 25 [55]	10 [22] / 32 [71]	15 [33] / 35 [77]	19 [42] / 47 [104]
Refrigerant Pipe Diameter	Liquid Side	mm	ø 6.35	ø 6.35	ø 6.35	ø 6.35	ø 6.35
		inch	1/4	1/4	1/4	1/4	1/4
	Gas Side	mm	ø 9.52	ø 9.52	ø 12.70	ø 12.70	ø 15.88
		inch	3/8	3/8	1/2	1/2	5/8
Pipe Extension	Chargeless Pipe Length	m	7.5	7.5	10.0	10.0	10.0
	Maximum Pipe Length	m	20	20	30	30	30
	Maximum Elevation Length	m	15	15	20	20	20
	Additional Refrigerant Gas*	g/m	10	10	15	15	25
Power Supply			Outdoor	Outdoor	Outdoor	Outdoor	Outdoor

*When pipes are not extended from the chargeless pipe length, the required amount of refrigerant is already in the unit.

OUTDOOR UNIT

**BLUE FIN
CONDENSER**



CU-RU9AKQ



CU-RU12AKQ



**CU-RU18AKQ
CU-RU24AKQ**



CU-XU30AKQ



CS-PU36WKQ

Wireless
(Standard)

POWERFUL



MODEL	INDOOR UNIT (60Hz)		CS-PU36WKQ
	OUTDOOR UNIT		CU-PU36WKQ
Cooling Capacity	(min-max)	kW	10.0 (2.7-11.0)
	(min-max)	kJ/h	36,000 (9,720-39,600)
EER	(min-max)	kJ/hW	10.8 (17.1-10.6)
CSPF		W/W	5.54 (5★)
Electrical Data	Voltage	V	230
	Current	A	15.0
	Power Input (min-max)	W	3,330 (570-3,730)
Moisture Removal		L/h (Pt/h)	4.4 (9.4)
Air Circulation	Indoor	m ³ /min (ft ³ /min)	24.0 (847)
	Outdoor	m ³ /min (ft ³ /min)	82.2 (2,902)
Noise Level	Indoor (H / L / Q-Lo)	dB (A)	49/39
	Outdoor (H)	dB (A)	57
Unit Dimension- Installed Condition Indoor (Outdoor)	Height	mm	295 (955)
		inch	11-5/8 (37-5/8)
	Width	mm	1,160 (1,100)
		inch	45-11/16 (43-5/16)
Depth	mm	255 (370)	
	inch	10-1/16 (14-19/32)	
Packaging Dimension- Stacking Condition Indoor (Outdoor)	Height	mm	375 (1,018)
		inch	14-25/32 (40-3/32)
	Width	mm	1,250 (1,305)
		inch	49-7/32 (51-13/32)
Depth	mm	331 (535)	
	inch	13-1/16 (21-3/32)	
Net Weight	Indoor / Outdoor	kg (lb)	14 (31) / 76 (168)
Gross Weight	Indoor / Outdoor	kg (lb)	20 (44) / 85 (187)
Refrigerant Pipe Diameter	Liquid Side	mm	ø 6.35
		inch	1/4
	Gas Side	mm	ø 15.88
		inch	5/8
Pipe Extension	Chargeless Pipe Length	m	10.0
	Maximum Pipe Length	m	30
	Maximum Elevation Length	m	20
	Additional Refrigerant Gas*	g/m	25
Power Supply			Outdoor

*When pipes are not extended from the chargeless pipe length, the required amount of refrigerant is already in the unit.

OUTDOOR UNIT



CU-PU36WKQ

STANDARD NON-INVERTER

Single-Split Type



CS-PN9XKQ | CS-PN12XKQ



Wireless
(Standard)



CS-PN18XKQ | CS-PN24XKQ



Wireless
(Standard)

BIG FLAP
[CS-PN9/12XKQ]

AEROWINGS
[CS-PN18/24XKQ]

POWERFUL

MODEL	INDOOR UNIT (60Hz)		CS-PN9XKQ	CS-PN12XKQ	CS-PN18XKQ	CS-PN24XKQ	
	OUTDOOR UNIT		CU-PN9XKQ	CU-PN12XKQ	CU-PN18XKQ	CU-PN24XKQ	
Cooling Capacity			kW	2.67	3.55	5.25	6.80
			kJ/h	9,610	12,780	18,900	24,480
EER			kJ/hW	11.2	11.5	11.2	11.4
CSPF			W/W	3.30 (1★)	3.40 (2★)	3.30 (2★)	3.37 (2★)
Electrical Data	Voltage	V	230	230	230	230	
	Current	A	3.8	4.9	7.4	9.6	
	Power Input	W	860	1,110	1,690	2,140	
Moisture Removal			L/h (Pt/h)	1.6 (3.4)	2.1 (4.4)	2.9 (6.1)	3.9 (8.2)
Air Circulation	Indoor	m ³ /min (ft ³ /min)	10.4 (367)	11.5 (406)	17.9 (632)	20.5 (724)	
	Outdoor	m ³ /min (ft ³ /min)	29.2 (1,030)	33.6 (1,190)	36.9 (1,300)	52.5 (1,850)	
Noise Level	Indoor (H / L / Q-Lo)	dB (A)	36/26	40/29	43/39	47/42	
	Outdoor (H)	dB (A)	49	50	54	55	
Unit Dimension- Installed Condition Indoor (Outdoor)	Height	mm	290 (511)	290 (542)	295 (619)	295 (695)	
		inch	11-7/16 (20-1/8)	11-7/16 (21-11/32)	11-5/8 (24-3/8)	11-5/8 (27-3/8)	
	Width	mm	779 (650)	779 (780)	1,040 (824)	1,040 (875)	
		inch	30-11/16 (25-19/32)	30-11/16 (30-23/32)	40-31/32 (32-15/32)	40-31/32 (34-15/32)	
	Depth	mm	209 (230)	209 (289)	244 (299)	244 (320)	
		inch	8-1/4 (9-1/16)	8-1/4 (11-13/32)	9-5/8 (11-25/32)	9-5/8 (12-5/8)	
Packaging Dimension- Stacking Condition Indoor (Outdoor)	Height	mm	255 (578)	255 (603)	314 (680)	314 (761)	
		inch	10-1/16 (22-25/32)	10-1/16 (23-3/4)	12-3/8 (26-25/32)	12-3/8 (29-31/32)	
	Width	mm	861 (784)	861 (891)	1,148 (958)	1,148 (1,049)	
		inch	33-29/32 (30-7/8)	33-29/32 (35-3/32)	45-7/32 (37-23/32)	45-7/32 (41-5/16)	
	Depth	mm	364 (347)	364 (396)	383 (416)	383 (460)	
		inch	14-11/32 (13-11/16)	14-11/32 (15-19/32)	15-3/32 (16-13/32)	15-3/32 (18-1/8)	
Net Weight	Indoor / Outdoor	kg (lb)	8 (18) / 21 (46)	8 (18) / 28 (62)	12 (26) / 35 (77)	12 (26) / 54 (119)	
Gross Weight	Indoor / Outdoor	kg (lb)	9 (20) / 23 (51)	9 (20) / 30 (66)	14 (31) / 38 (84)	14 (31) / 58 (128)	
Refrigerant Pipe Diameter	Liquid Side	mm	ø 6.35	ø 6.35	ø 6.35	ø 6.35	
		inch	1/4	1/4	1/4	1/4	
	Gas Side	mm	ø 9.52	ø 12.70	ø 12.70	ø 15.88	
		inch	3/8	1/2	1/2	5/8	
Pipe Extension	Chargeless Pipe Length	m	7.5	7.5	7.5	7.5	
	Maximum Pipe Length	m	20	20	30	30	
	Maximum Elevation Length	m	15	15	20	20	
	Additional Refrigerant Gas*	g/m	10	10	15	25	
Power Supply			Outdoor	Outdoor	Outdoor	Outdoor	

*When pipes are not extended from the chargeless pipe length, the required amount of refrigerant is already in the unit.

OUTDOOR UNIT

**BLUE FIN
CONDENSER**

**R32
REFRIGERANT**



CU-PN9XKQ



CU-PN12XKQ



CU-PN18XKQ



CU-PN24XKQ

Wall-Mounted				
Split Type	PREMIUM INVERTER	DELUXE INVERTER	STANDARD INVERTER	STANDARD NON-INVERTER
Cooling Models	CS-XU9AKQ CS-XU12AKQ CS-XU18AKQ CS-XU24AKQ CS-XU30AKQ	CS-RU9AKQ CS-RU12AKQ CS-RU18AKQ CS-RU24AKQ	CS-PU9AKQ CS-PU12AKQ CS-PU18AKQ CS-PU24AKQ CS-PU30AKQ	CS-PN9XKQ CS-PN12XKQ CS-PN18XKQ CS-PN24XKQ
CLEANER AIR				
nanoe™ X	● [Mark 3]	● [Mark 2]		
nanoe-G	●	●		
Inside Cleaning On Demand	●	●		
Anti-Dust Coating	●			
Odour-Removing Function	●	●	●	●
Removable, Washable Panel	●	●	●	●
CONVENIENCE				
Wi-Fi	● [Built-In]	● [Built-In]	● [Built-In]	
24-Hour Dual ON & OFF Real Setting Timer	●	●	●	
24-Hour ON & OFF Real Setting Timer				●
LCD Wireless Remote Control	●	●	●	●
Wired Remote Control	● [Optional]	● [Optional]	● [Optional]	
COMFORT				
iAUTO-X	●			
Powerful Mode		●	●	●
Humidity Sensor	●			
SLEEP	●	●	●	●
Quiet Mode	●	●	●	●
Soft Dry Operation Mode	●	●	●	●
Personal Airflow Creation	●	● [RU24]	● [PU24/PU30]	
Airflow Direction Control [Up & Down]		● [RU9/RU12/RU18]	● [PU9/PU12/PU18]	●
Manual Horizontal Airflow Direction Control		● [RU9/RU12/RU18]	● [PU9/PU12/PU18]	●
ENERGY EFFICIENCY				
Inverter Control	●	●	●	
ECO Mode with A.I.	●	●	●	
RELIABILITY				
Random Auto Restart [32 Restart Patterns]	●	●	●	●
Blue Fin Condenser	●	●	●	●
Long Piping [Numbers indicate the maximum pipe length]	20m [XU9/XU12] 30m [XU18/XU24/XU30]	20m [RU9/RU12] 30m [RU18/RU24]	20m [PU9/PU12] 30m [PU18/PU24/PU30]	20m [PN9/PN12] 30m [PN18/PN24]
Top-Panel Maintenance Access	●	●	●	●
Self-Diagnostic Function	●	●	●	

FEATURES EXPLANATION

CLEANER AIR

nanoe™ X

nanoe™ X effectively deodorises and inhibits various pollutants for a fresher and cleaner living space.



nanoe-G

nanoe-G works effectively on removing dust particles as small as PM2.5.



INSIDE CLEANING ON DEMAND

Cleanses the inside of the indoor unit by removing moisture, and releasing nanoe™ X to inhibit various pollutants, delivering clean air for your home.



ANTI-DUST COATING

Anti-dust coating prevents dust from accumulating on cross flow fan by keeping it clean.



ODOUR-REMOVING FUNCTION

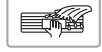
With this function, there's no unpleasant odor when the unit starts up. That's because the fan remains off momentarily, while the source of the odour inside the air conditioner is suppressed.



The unit must be in cool or dry mode and the fan speed must be set to automatic.

REMOVABLE, WASHABLE PANEL

Gives you easy access to the filter as well as making the unit easy to clean.



CONVENIENCE

Wi-Fi

Control air conditioners remotely by turning your mobile device into a remote controller using internet connection.



24-HOUR DUAL ON & OFF REAL SETTING TIMER

This feature enables you to preset two different sets of start/stop operation timer (hour and minute) within a 24-hour time frame.



24-HOUR ON & OFF REAL SETTING TIMER

The exact operating time (hour and minute) of the air conditioner can be set in advance. From here on, the unit will operate in accordance to these preset hours every day until the system is reset.



LCD WIRELESS REMOTE CONTROL

Easy control of the unit from anywhere in the room.



WIRED REMOTE CONTROL

Control at the unit from fixed location where wired remote controller is installed.



COMFORT

iAUTO-X

Come home to ultra-fast cooling, and then enjoy continuous comfort Shower Cooling that evenly distributes cool air. Reactivate faster cooling with a second press of the iAUTO-X button.



POWERFUL MODE

POWERFUL Mode cools your room faster for instant cooling comfort.



HUMIDITY SENSOR

Air conditioner with Humidity Sensor allows you to control and adjust the relative humidity level to below 55% ~ 60% by turning on Dry Mode or iAUTO-X.



SLEEP MODE

Delays off timer with temperature control for better sleep.



QUIET MODE

Enjoy the comfort of running your air conditioner at night for a relaxing sleep.



SOFT DRY OPERATION MODE

Starts with cooling to dehumidify, then provides continuous breeze at a low frequency to keep a room dry without much change to the temperature.



PERSONAL AIRFLOW CREATION

Vertical and horizontal airflow patterns can be combined as desired to achieve optimum comfort, with operation possible by remote even from a distance.



AIRFLOW DIRECTION CONTROL (UP & DOWN)

Vertical airflow patterns can be controlled with operation by remote, even from a distance.



MANUAL HORIZONTAL AIRFLOW DIRECTION CONTROL

Horizontal airflow patterns can be manually adjusted.



ENERGY EFFICIENCY

INVERTER CONTROL

Varies the rotation speed of the compressor for higher energy savings.



ECO MODE WITH A.I.

Auto-adjusts to the optimal ECO level based on heat load conditions and air conditioning cooling capacity.



RELIABILITY

RANDOM AUTO RESTART

When multiple units are connected and there is a power outage, they will turn on at different times in order to not spike the power supply.



BLUE FIN CONDENSER

Extra protection from the elements with a longer lasting coil.



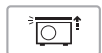
LONG PIPING

Long piping offers more flexible installation options.



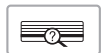
TOP-PANEL MAINTENANCE ACCESS

Easy access for maintenance.



SELF-DIAGNOSTIC FUNCTION

Should a malfunction occur, the unit diagnoses the problem and shows the corresponding alphanumeric code. This allows for quicker servicing.



Panasonic®

- Please read the Installation Instructions carefully before installing the unit, and the Operating Instructions before using it.
- Specifications are subject to change without prior notice.
- The contents of this catalogue are accurate as of January 2024.
- Due to printing considerations, actual colours may vary slightly from those shown.
- All graphics are provided solely for the purpose of illustrating a point.



Do not add or replace refrigerant other than the specified type. Manufacturer is not responsible for damage or deterioration in safety due to usage of other refrigerant.

Authorised Dealer



Panasonic Customer Care Center

Ortigas Avenue Extension, Taytay, Rizal, 1920 Philippines

Hotline : (02)8-706-7603

PLDT Toll Free : 1800-10-7262782

GLOBE Toll Free : 1800-82-934357

Email : pmpc_csdccic@ph.panasonic.com

SMS (Text only) : TYPE Panasonic<space>message and send to

Globe/TM subscribers : 21584703

SMART, SUN, TNT subscribers : 225654703

Fax : (02)8-706-7612

Facebook : Panasonic Philippines

Official Website : <https://www.panasonic.com/ph>